

SECONDE GUITARE.

Andante moderato.

DIVERTISSEMENT.

The first section of the music, marked 'Andante moderato', consists of four staves. The first staff is a single melodic line in treble clef with a key signature of one sharp (F#) and a 2/4 time signature. The second and third staves are guitar accompaniment, featuring a mix of chords and arpeggiated patterns. The fourth staff continues the accompaniment with more complex chordal textures.

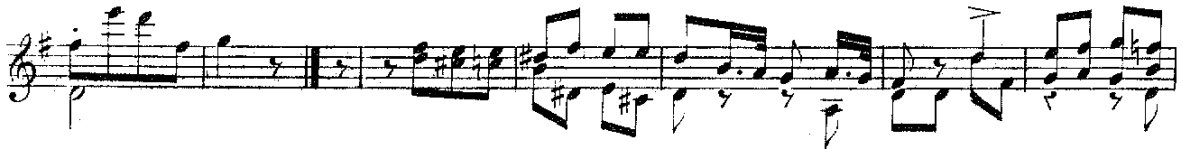
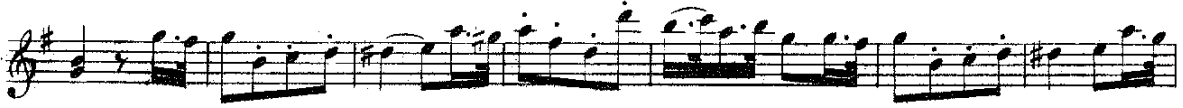
Andantino.

The second section of the music, marked 'Andantino', consists of four staves. The first staff is a single melodic line in treble clef with a key signature of one sharp (F#) and a 3/4 time signature. The second and third staves are guitar accompaniment, featuring a mix of chords and arpeggiated patterns. The fourth staff continues the accompaniment with more complex chordal textures.

SECONDE GUITARE.

The musical score for the second guitar part on page 5 consists of eight staves of music. The key signature is G major (one sharp). The notation includes a variety of rhythmic patterns, such as eighth and sixteenth notes, and chordal textures. The first staff begins with a treble clef and a key signature of one sharp. The second staff features a dynamic marking of *tr* (trillo) and a *f* (forte) marking. The third staff continues with complex rhythmic patterns. The fourth staff shows a series of chords and eighth notes. The fifth staff has a *f* marking. The sixth staff features a series of eighth notes. The seventh staff continues with eighth notes and chords. The eighth staff concludes with a *Harm:* (harmonic) marking and a *tr* marking.

SECONDE GUITARE.



SECONDE GUITARE.



SECONDE GUITARE.



SECONDE GUITARE.

The musical score for the second guitar part consists of seven staves of music. The first staff begins with a first ending (1<sup>e</sup>) and a second ending (2<sup>e</sup>). A *poco* marking is present below the first ending. The second staff starts with a forte (*f*) dynamic. The third staff continues the melodic line. The fourth staff features a piano (*p*) dynamic and includes slurs over the notes. The fifth staff continues the melodic development. The sixth staff includes slurs and a final cadence. The seventh staff concludes the piece with a final cadence.